



CGI depicts home 91 and is representative of homes 44, 47, 49, 72 & 75, indicative only. Home 88 is a semi detached variation of this. Homes 82 & 84 present variations on the external finishes. Please ask Sales Executive for further images.

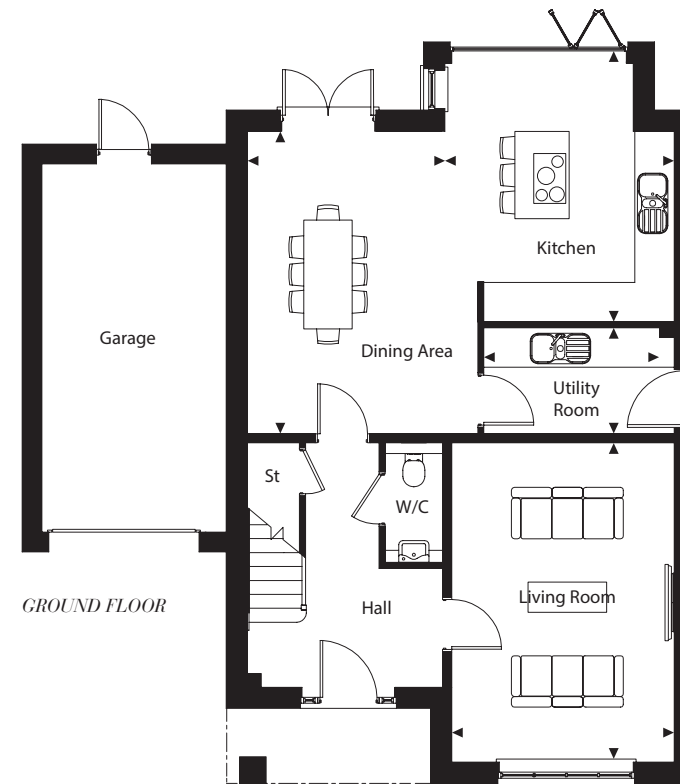
THE RIPLEY

A four bedroom home

(TYPE E1)

These delightful 4 bedroom homes have been carefully planned for modern family life. The airy entrance hall leads through to a generous open-plan kitchen/dining area and separate living room. Upstairs, there are four generous double bedrooms, including the master bedroom which benefits from an en-suite and fitted wardrobe.

The Ripley homes feature integral garages and one or two additional parking spaces. Homes 44, 47, 49, 72, 75, 82, 84 & 91 are detached and home 88 is semi-detached.



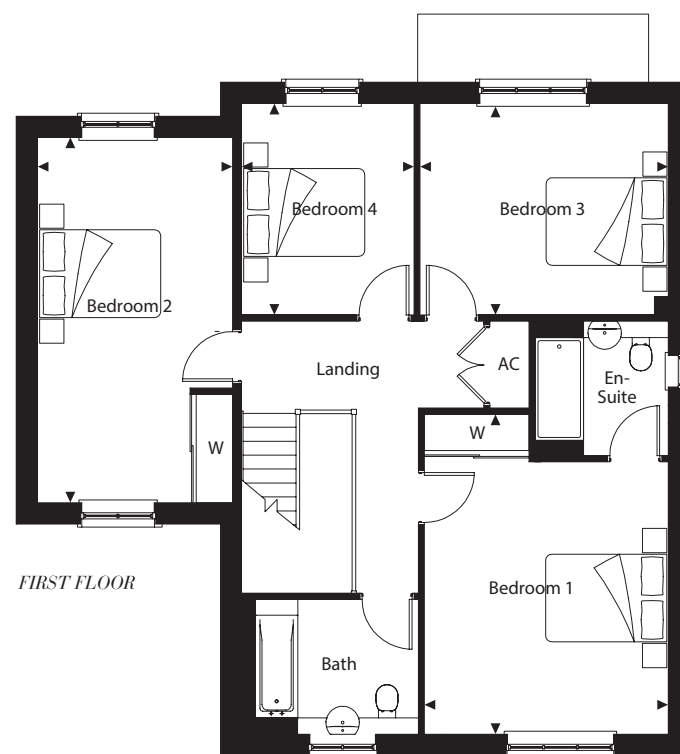
GROUND FLOOR

Homes 44, 47, 49, 72, 75*,
82*, 84*, 88 & 91



GROUND FLOOR

- LIVING ROOM
5.25m x 3.65m 17'3" x 12'0"
- KITCHEN
4.25m x 3.75m 13'11" x 12'4"
- DINING AREA
5.00m x 3.25m 16'5" x 10'8"
- UTILITY ROOM
3.15m x 1.75m 10'4" x 5'8"



FIRST FLOOR

FIRST FLOOR

- BEDROOM 1
5.25m x 4.00m 17'3" x 13'1"
- BEDROOM 2
6.00m x 3.20m 19'8" x 10'6"
- BEDROOM 3
4.10m x 3.50m 13'5" x 11'6"
- BEDROOM 4
3.50m x 2.85m 11'6" x 9'4"

KEY: AC: Airing Cupboard W: Wardrobe St: Store ▶: Depicts where measurements have been taken from Floorplans showing Homes 44, 47, 49, 72, 88 & 91. *Homes 75, 82 & 84 are mirrored versions.

Floorplans shown for Sycamore Gardens are approximate measurements only. Exact layouts and sizes may vary. All measurements may vary within a tolerance of ± 50mm and are not intended to be used for carpet sizes, appliance sizes or items of furniture. Furniture layouts are indicative only. Kitchen layout is indicative only, please ask one of our Sales Executives for further information.